

Monolayer graphene on SiC

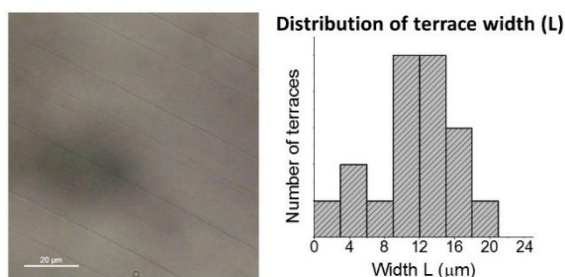
Graphene film characteristics:

Coverage	Monolayer graphene area	Terrace width / Step height	Optical transmittance
100 %	85±5 %	15 μm / 10±2 nm	> 97 %
Sheet Resistance	Charge carrier mobility at room temperature	Carrier density	Carrier type
125 Ω□	1000 - 2000 cm²V⁻¹s⁻¹	10¹³ cm⁻²	Electrons

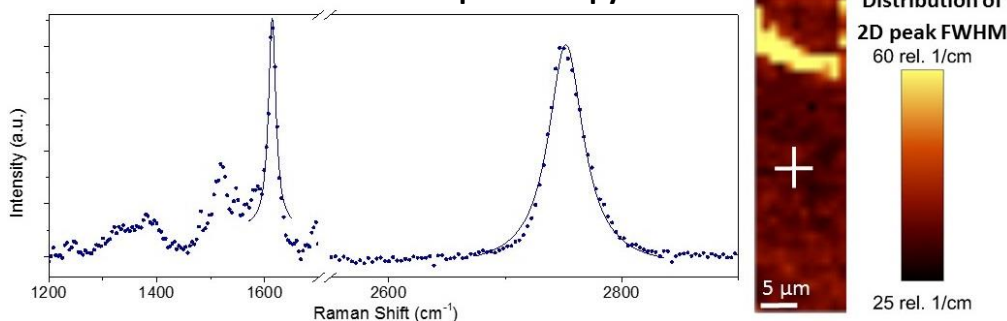
Substrate properties:

Type	Orientation	Face	Substrate Resistivity	Dopant	Sample size	Thickness
4H-SiC	{0001}±0.25 deg	Si	4.4x10⁹ Ωm	Nominally undoped	8x8 mm²	350±50 μm

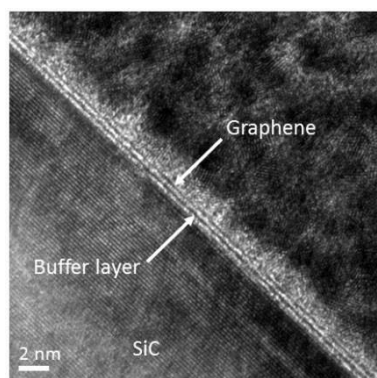
Optical Microscopy



Raman Spectroscopy



HRTEM Image



Lithography - Electrical Characterization

